

**Thomas Pretz ,
Hermann Wotruba (eds.)**

7th Sensor-Based Sorting & Control 2016

Shaker Verlag
Aachen 2016

Bibliographic information published by the Deutsche Nationalbibliothek

The Deutsche Nationalbibliothek lists this publication in the Deutsche Nationalbibliografie; detailed bibliographic data are available in the Internet at <http://dnb.d-nb.de>.

Cover picture: Schematic illustration of a chute-type sensor-based sorter (Berwanger & Knapp)

Editor: Prof. Dr.-Ing. Thomas Pretz and Prof. Dr.-Ing. Hermann Wotruba

The content of the papers is the sole responsibility of the authors.

Editorial Staff: RWTH International Academy gGmbH, Margarita Fabrizius

Production and Marketing: RWTH International Academy gGmbH

Copyright Shaker Verlag 2016

All rights reserved. No part of this publication may be reproduced, stored in a retrieval system, or transmitted, in any form or by any means, electronic, mechanical, photocopying, recording or otherwise, without the prior permission of the publishers.

Printed in Germany.

ISBN 978-3-8440-4323-5

Shaker Verlag GmbH • P.O. BOX 101818 • D-52018 Aachen

Phone: 0049/2407/9596-0 • Telefax: 0049/2407/9596-9

Internet: www.shaker.de • e-mail: info@shaker.de



Iron ore



Copper & Fe

Silver & Fe



Copper & Fe

Leading Separation:
Magnet+Sensor
Sorting Solutions

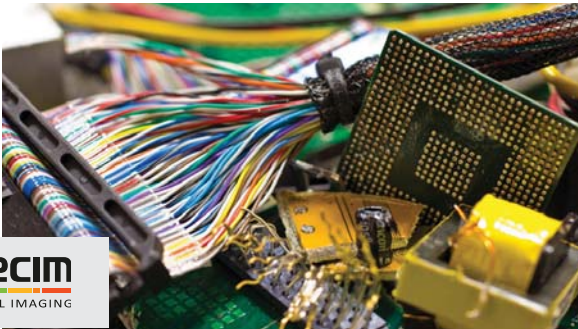


steinertglobal.com



Hyperspectral Imaging

Your tool for sorting applications



SPECIM
SPECTRAL IMAGING

- Fast
- High resolution
- Flexible
- Different wavelength ranges for different materials.

For example: metals, plastics, ores, papers, glasses, ceramics

LOT-QuantumDesign GmbH.
Im Tiefen See 58. 64293 Darmstadt.
☎ 06151 8806-0. info@lot-qd.de



lot-qd.com



PROGRESS THROUGH DIVERSITY

SPALECK[®]

since 1869

conveying and separation technology

An absolute
world first –
applied for
patent now

A class of its own **The New Spaleck Flip-Flow Panel**



Designed for preceding screening. Universally applicable for almost all Spaleck units. You also can upgrade your existing Spaleck unit.

- Less cleaning effort with constant screening quality
- Full utilization of the entire machine width

Interested? Questions?

Just call us on +49 2871 2134-618

Spaleck GmbH & Co. KG

46397 Bocholt/Germany

f-s@spaleck.de · www.spaleck.de/f-s

Cover picture: Schematic illustration of a chute-type sensor-based sorter
(Berwanger & Knapp)

Editor: Prof. Dr.-Ing. Thomas Pretz and Prof. Dr.-Ing. Hermann Wotruba

All rights reserved. No part of this publication may be reproduced or electronically processed,
copied or distributed without the prior consent by the editor.

The content of the papers is the sole responsibility of the authors.

Editorial Staff: RWTH International Academy gGmbH, Margarita Fabrizious

Production and Marketing: RWTH International Academy gGmbH

Printed by: Shaker Verlag



7th Sensor-Based Sorting & Control 2016

Scientific Direction:

Prof. Dr.-Ing. Thomas Pretz and Prof. Dr.-Ing. Hermann Wotruba

A joint conference of Department of Processing and Recycling (I.A.R.) and the Unit of Mineral Processing (AMR) of RWTH Aachen University as well as RWTH International Academy

February 23-24, 2016 in Aachen, Germany

Sponsors



Content

Interdisciplinary sensor-based process design and project development Dr. Christopher Robben, TOMRA Sorting Solution, Germany	15
Development and testing of real-time shovel-based mineral sensing systems for enhanced recovery of mined material Andrew Bamber, MineSense Technologies Ltd., Vancouver	21
Bridging the gap: Understanding the economic impact of ore sorting on a mineral processing circuit Kai Bartram, Steinert Elektromagnetbau, Germany	37
Sorting of black Plastics using statistical pattern recognition on terahertz frequency domain data Christian Brandt, Fraunhofer IAIS, Germany	51
Chemical imaging: A powerful tool for sorting applications and process analysis in the mining and food industries Dr. Matthias Kerschhaggl, EVK, Austria	61
Improvement of dry paper waste sorting through data fusion of visual and NIR data Philip Klippel, Research Group CORSSNAV, University of Applied Science Munich, Germany	73
Influence of various parameters on LIBS for the application to sorting Prof. Shuji Owada, Waseda University, Japan	83
Operation of LIBS elemental analyzers for inline analysis of mineral resources and industrial products Dipl.- Ing. Angelika Feierabend, SECOPTA, Germany	93

Characterizing the economic value of an epithermal Au-Ag ore with laser induced breakdown spectroscopy (LIBS): possibilities and limitations Marinus Dalm, Delft University of Technology, Netherlands	105
Automated LIBS-based classification for spent refractories from the steel industry for high-value recycling Sven Connemann, Fraunhofer ILT, Germany	119
I-SORT3R™, a computer vision system to perform remote waste sorting Aude Maitrot, Veolia Recherche & Innovation, France	129
New ejection principle for optical sorters in waste applications Dipl.-Ing. Winfrid Rauch, Manufacture à Besançon (MaB) SARL, France	141
Microwave heating of ores to replace both conventional value-sensing and air-blast sorting Mark Van Weert, Engineering Technologist, Canada	147
Adaptive Sorting of Plastic Granulates Marcel Bosling, Department of Processing and Recycling, RWTH Aachen University, Germany	157
Bag of visual words — A computer vision method applied to bulk material sorting Matthias Richter, Karlsruhe Institute of Technology, Germany	169
Automated Segmentation of Electronic Components on Waste Printed Circuit Boards Johannes Ruecker, Hochschule Aschaffenburg, Germany	179
Refrasort: Automated sorting of refractory waste for high value recycling Liesbeth Horckmans, VITO NV, Belgium	187
Integrating LIBS and NIR for detection of heavy metals in perlite ores Adriana Guatame-Garcia, Department of Geoscience & Engineering, Delft University of Technology, Netherlands	195

Mutual Separation of Aluminum Alloys by Combining Appearance Recognition with Neural Network Analysis (ARENNA) and Laser-induced Breakdown Spectroscopy (LIBS) Sorters	209
Makoto Harita, Harita Metal, Japan	
A newly developed XRF-Sensor with high sensitivity for increased sorting efficiency	221
Dr. Günter Buzanich, LLA Instruments, Germany	
Radiation Safety of X-ray based mineral sorting machines	233
Narendra Viranna, De Beers Technologies, South Africa	
Online Prompt Gamma Neutron Activation Analysis for the Characterization of Raw Materials	239
Marius Hirsch, Aachen Institute for Nuclear Training, Germany	
An empirical approach for more effective recycling of electronic components in WEEE	249
Johannes Ruecker, University of Applied Science Aschaffenburg, Germany	
Material Stream Characterization with Acoustic Emission Technology	259
Tobias Vraetz, Institute for Mineral Resource Machine Technology, RWTH Aachen University, Germany	