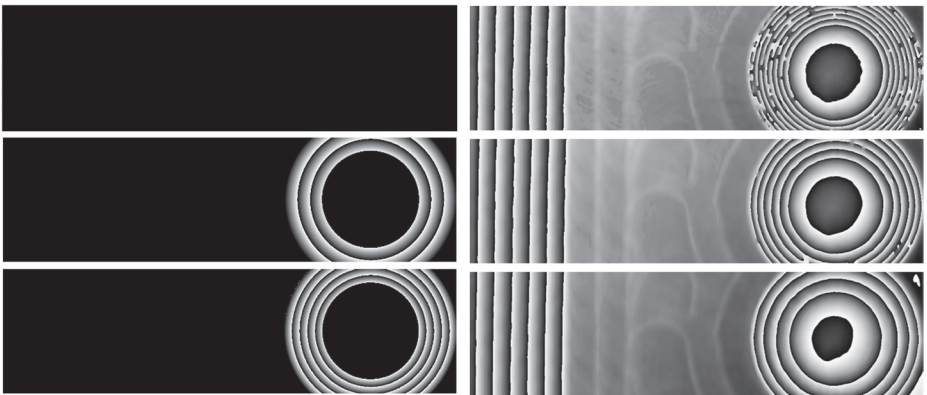


---

## REPORTS ON MEASUREMENT AND SENSOR SYSTEMS

### Wavefront Generator for Electronic Speckle-Pattern Interferometers

Laura Maria Bilgeri





Fakultät für Elektrotechnik und Informationstechnik  
Lehrstuhl für Messsystem- und Sensortechnik

# Wavefront Generator for Electronic Speckle-Pattern Interferometers

Laura Maria Bilgeri

Vollständiger Abdruck der von der Fakultät für  
Elektrotechnik und Informationstechnik  
der Technischen Universität München  
zur Erlangung des akademischen Grades eines

**Doktor-Ingenieurs**

genehmigten Dissertation.

Vorsitzender: Prof. Dr.-Ing. Gerhard Rigoll  
Prüfer der Dissertation: 1. Prof. Dr.-Ing. habil. Dr. h.c. Alexander W. Koch  
2. Prof. Felix Jose Salazar Bloise, Ph. D.

Die Dissertation wurde am 12.11.2018 bei der  
Technischen Universität München eingereicht und durch die Fakultät für  
Elektrotechnik und Informationstechnik am 14.01.2019 angenommen.



Reports on Measurement and Sensor Systems

**Laura Maria Bilgeri**

**Wavefront Generator for Electronic  
Speckle-Pattern Interferometers**

Shaker Verlag  
Düren 2019

**Bibliographic information published by the Deutsche Nationalbibliothek**

The Deutsche Nationalbibliothek lists this publication in the Deutsche Nationalbibliografie; detailed bibliographic data are available in the Internet at <http://dnb.d-nb.de>.

Zugl.: München, Techn. Univ., Diss., 2019

Copyright Shaker Verlag 2019

All rights reserved. No part of this publication may be reproduced, stored in a retrieval system, or transmitted, in any form or by any means, electronic, mechanical, photocopying, recording or otherwise, without the prior permission of the publishers.

Printed in Germany.

ISBN 978-3-8440-6645-6

ISSN 1617-6553

Shaker Verlag GmbH • Am Langen Graben 15a • 52353 Düren

Phone: 0049/2421/99011-0 • Telefax: 0049/2421/99011-9

Internet: [www.shaker.de](http://www.shaker.de) • e-mail: [info@shaker.de](mailto:info@shaker.de)

# Contents

<b>1</b>	<b>Introduction and Motivation</b>	<b>1</b>
<b>2</b>	<b>Speckle Measurement Techniques</b>	<b>5</b>
2.1	Fundamentals . . . . .	6
2.1.1	Speckle Effect . . . . .	6
2.1.2	Speckle-Pattern Interferometry . . . . .	9
2.1.3	Sensitivity Vector . . . . .	11
2.2	Displacement Measurement . . . . .	13
2.3	Shape Measurement . . . . .	15
2.3.1	Two-Wavelength Technique . . . . .	16
2.3.2	Two-Source Technique . . . . .	18
2.3.3	Limitations . . . . .	18
2.4	Phase Retrieval . . . . .	20
2.4.1	Phase-Shifting Algorithms . . . . .	22
2.4.1.1	Temporal Phase Shifting . . . . .	25
2.4.1.2	Spatial Phase Shifting . . . . .	26
2.4.2	Carrier Frequency Technique . . . . .	27
2.4.3	Natural Demodulation Process . . . . .	30
2.5	Phase Unwrapping . . . . .	32
<b>3</b>	<b>Wavefront Generation: Theory</b>	<b>35</b>
3.1	Modulation Procedures . . . . .	35
3.1.1	Intensity Modulation . . . . .	37
3.1.2	Phase Modulation . . . . .	37
3.2	Spatial Light Modulators . . . . .	39
3.3	Application in Electronic Speckle-Pattern Interferometry . . . . .	41
3.3.1	Phase Modulation for Sensitivity Adaptation . . . . .	42
3.3.2	Phase Modulation Effects . . . . .	48

<b>4</b>	<b>Wavefront Generation: Experimental</b>	<b>57</b>
4.1	Experimental Setup . . . . .	57
4.2	Implementation of Wavefront Generators . . . . .	59
4.2.1	Wavefront Generation . . . . .	60
4.2.2	Liquid-Crystal-Based Spatial Light Modulators . . . . .	60
4.2.2.1	Electrically Addressed Modulator . . . . .	64
4.2.2.2	Optically Addressed Modulator . . . . .	66
4.2.3	Calibration of Spatial Light Modulators . . . . .	68
4.3	Methodology . . . . .	72
4.3.1	Phase Shifting . . . . .	73
4.3.2	Wavefront Modeling . . . . .	75
4.3.2.1	Phase-Map Quality Criteria . . . . .	75
4.3.2.2	Direct Modeling . . . . .	80
4.3.2.3	Heuristic Modeling . . . . .	81
4.3.3	Sensitivity Adaptation . . . . .	82
<b>5</b>	<b>Wavefront Generation: Results</b>	<b>85</b>
5.1	Phase Retrieval . . . . .	87
5.1.1	Temporal Phase Shifting . . . . .	87
5.1.2	Spiral Interferometry . . . . .	90
5.2	Performance of the Liquid-Crystal-Based Spatial Light Modulators . . . . .	94
5.2.1	Electrically Addressed Modulator . . . . .	94
5.2.2	Optically Addressed Modulator . . . . .	100
5.3	Shape Measurements with Sensitivity Adaptation . . . . .	105
5.3.1	Desensitizing . . . . .	106
5.3.2	Sensitizing . . . . .	113
5.3.3	Assessment of the Sensitivity Adaptation . . . . .	121
<b>6</b>	<b>Summary</b>	<b>125</b>
<b>A</b>	<b>Appendix</b>	<b>129</b>
A.1	Derivations . . . . .	129
A.1.1	Dima: 3-Step-Algorithm . . . . .	129
A.1.2	Schwider: 4-Step-Algorithm . . . . .	131
A.1.3	Natural Demodulation Process . . . . .	132
A.2	List of Symbols . . . . .	134
A.3	List of Abbreviations . . . . .	137
A.4	List of Tables & Figures . . . . .	139
A.5	Acknowledgment-Danksagung . . . . .	142

---

<b>Bibliography</b>	<b>143</b>
<b>Own Publications</b>	<b>160</b>
<b>Supervised Student Theses</b>	<b>161</b>