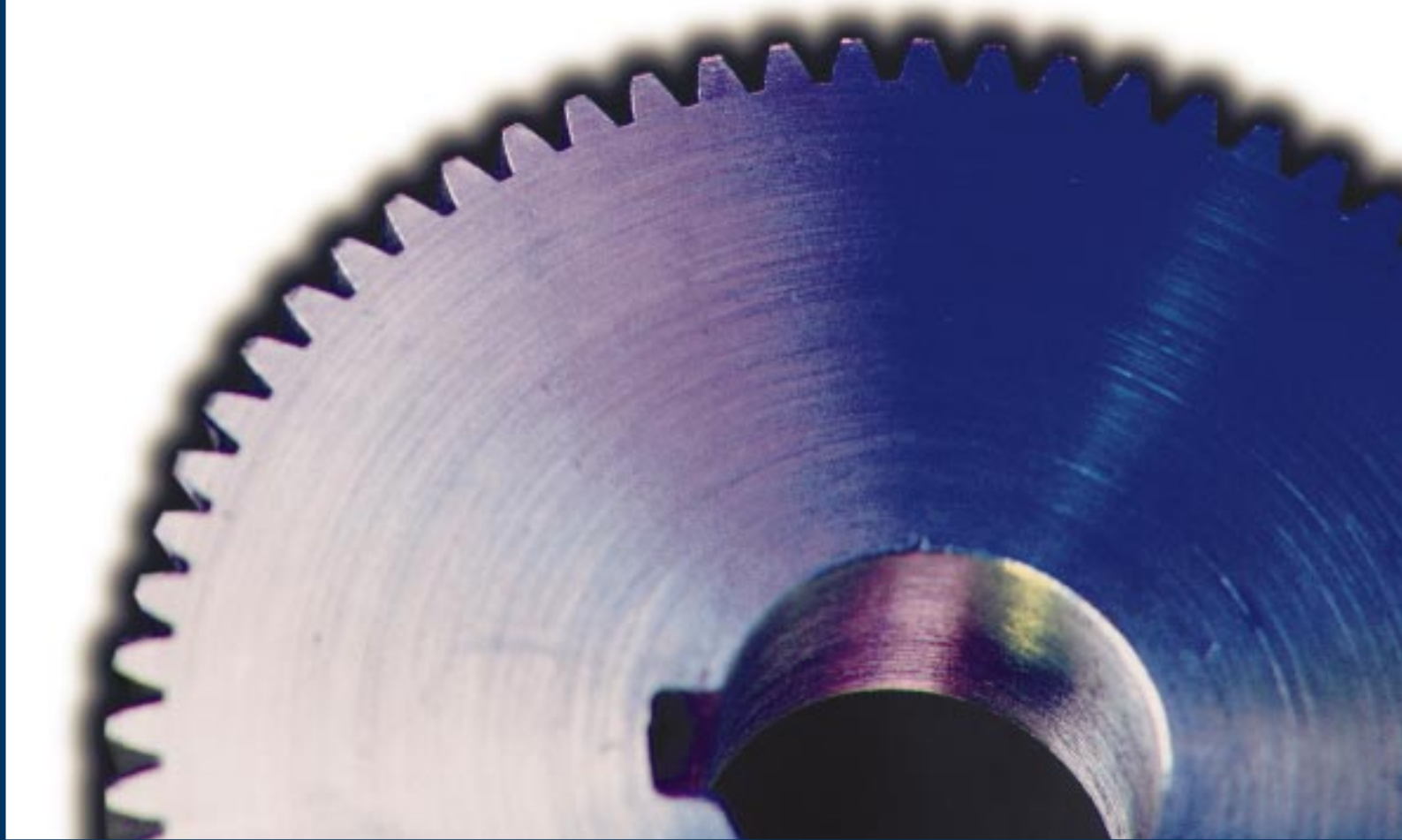




This guide is formatted for printing on A4 paper.
To print on letter paper, choose "Shrink to Fit"
while printing from Adobe Acrobat software.

Installing and Using the AdobePS™ Printer Driver



■ Table of Contents

Overview of AdobePS™ Printer Drivers	Page 3
Feature and Benefit Summary	Page 4
Before Your Begin	Page 5
AdobePS Driver For Windows® 95 Computers	
Installing the AdobePS Driver	Page 7
Setting Up Your Printer with AdobePS	Page 8
Printing with the AdobePS Driver	Page 12
AdobePS Driver for Macintosh Computers	
Installing the AdobePS Driver	Page 14
Setting up a printer with the AdobePS Driver	Page 15
Using the AdobePS Driver	Page 17
The Watermark Plug-in	Page 18
The Virtual Printer Plug-in	Page 19

©1998 Adobe Systems Incorporated. All rights reserved. v.1 May 1998 05/98

Adobe, the Adobe logo, Acrobat, Acrobat Distiller, AdobePS, PlanetReady, PostScript, PostScript 3, and the PostScript logo are trademarks of Adobe Systems Incorporated. Microsoft, Windows, and Windows NT are either registered trademarks or trademarks of Microsoft Corporation in the United States and/or other countries. Apple ColorSync, Macintosh, Mac, LaserWriter and TrueType are registered trademarks of Apple Computer, Inc. registered in the U.S. and other countries. Other brand or product names are the trademarks or registered trademarks of their respective holders.

■ Overview

Adobe® PostScript® Printer Drivers for Apple Macintosh and Microsoft® Windows® are the industry's most advanced and reliable printer drivers, adding functionality beyond the standard printing features of either operating system. No stranger to innovation in print drivers, Adobe advances the state-of-the-art once again with the release of a new generation in support of Adobe PostScript® 3™ technology.

Adobe PostScript printing technology is the worldwide standard for printing and imaging. It is built into printing systems from over 70 different manufacturers and makes it possible for them to print the highest quality text, graphics, and scanned images. Adobe PostScript devices include black-and-white printers, color printers, imagesetters, platesetters, and direct digital printing systems. Adobe PostScript Printer Drivers are available from Adobe and its printing system partners.

Called the *AdobePS™ Printer Driver*, this new generation of drivers allows you to print reliably with the quality you have come to expect from Adobe products. It offers powerful new capabilities that simplify your job and enhance productivity, including an improved user interface, the ability to print multiple-up pages, to insert watermarks, establish custom page sizes (where appropriate), and to establish custom defaults for printing conditions you use often. In addition, the new AdobePS drivers provide a flexible plug-in architecture that allows printer device manufacturers to optimize the user interface on both Macintosh and Windows computers, and add custom modules in support of unique printer capabilities. This simplifies your work and delivers successful printed pages more easily.

This document explains how to install and use the Adobe Printer Drivers, and how to take advantage of several of the key features they offer. Each feature is explained clearly in a step-by-step process.

The information in this document is specific to Macintosh and Windows 95; it does not cover the installation or use of the Adobe Printer Drivers on Windows NT® systems.

■ AdobePS Printer Driver Feature and Benefit Summary

Feature	Function	Benefit	8.5.1 Mac®	4.2.3 Win95	5.0 WinNT4
PostScript 3 support	Generates PostScript Level 3 language files.	One driver supports all Adobe PostScript Level 2 and PostScript 3 devices	✓ plus Level 1	✓	✓
PlanetReady™ – for Roman markets – for Asian markets	Printer driver available in ten languages.	Full font support for Roman, Asian, and Cyrillic fonts. Full support for international printing needs.	✓ ✓	✓ ✓	✓ Q2 99
Custom paper	Allows device manufacturers to add a custom module to support any kind of paper of any length or orientation.	Provides flexibility to accommodate unique page sizes and increase efficiency of media usage.	✓	✓	✓
Page layout (N-up)	Enables 2-up, 4-up, 6-up, 9-up, 16-up printing on the same page.	Creates at-a-glance documents, presentation hand-outs; increases efficiency of media usage.	✓	✓	✓
Watermarks	Lets user specify text that can be printed in the background anywhere on the document.	Makes it easy to indicate confidentiality, draft vs. final editions, or other document management information.	Plug-in	✓	No
Virtual Printer selection	Creates a PostScript file for a printer that is not present on the network.	Allows user to prepare PostScript files for printing on devices that aren't in their immediate work environment.	Plug-in	✓	✓
Automated PDF creation with Acrobat® Distiller®	Automates the creation of high-quality PDF files from the print dialog when Acrobat Distiller is present on the system.	Convenience and time savings. Turns a two-step, multi-application process into a simple one-step process.	Plug-in	✓	✓
Single-pass printing	Sends file directly to printer without first spooling to the local hard disk.	Frees up hard disk requirements for large files. Allows for faster download times.	New	✓	✓
Native PowerPC™	Optimized for use on PowerPCs.	Faster performance on computers with PowerPC microprocessors.	New	NA	NA
Print time device selection	Change from one printer to another at print time from within the application.	Convenience and efficiency. Don't have to select printer before printing.	New	✓	✓
Improved color management	Support for ColorSync® v. 2.0 and later on Mac. Fully supports ICM standard on Windows® 95.	Allows user to take advantage of industry-standard color management options.	✓	✓	NA
Plug-in architecture	Allows device manufacturers to add custom modules to the printer driver.	Allows device manufacturers to optimize driver interface and support unique printer capabilities.	✓	✓	✓
Full PPD support	First PostScript driver for the Windows NT® platform to fully support all PPD (PostScript Printer Description) files.	Provides access to device-specific printing options such as paper tray selection, color management, and more.	✓	✓	New
Full TrueType® font support	First PostScript driver for Windows NT platform to fully support TrueType fonts.	User can choose any font, including fonts that come standard with Windows NT, and know they will print correctly.	✓	✓	New

■ Before You Begin

You will need the following versions of *AdobePS Printer Drivers*.

- For Macintosh – Version 8.5.1 or higher
- For Windows 95 – Version 4.2.3 or higher

In addition, you will want these optional plug-ins for the Macintosh version of the AdobePS driver.

- Watermarks Plug-in
- Virtual Printer Plug-in

These drivers are typically bundled with Adobe PostScript 3 printing devices and can be found with the software that comes with each device. They are also available free of charge from the Adobe web site at <http://www.adobe.com>. Look for “Free Plug-Ins and Updates.”

■ Installing the AdobePS Driver

For Microsoft Windows...

Provided with the Adobe Printer Drivers for Windows is an installer *setup* application. To install, just follow these easy steps:

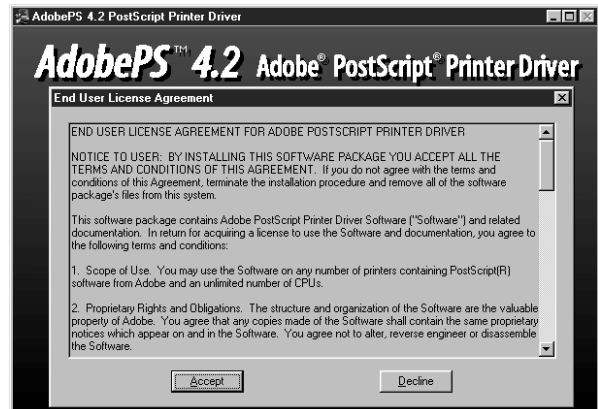
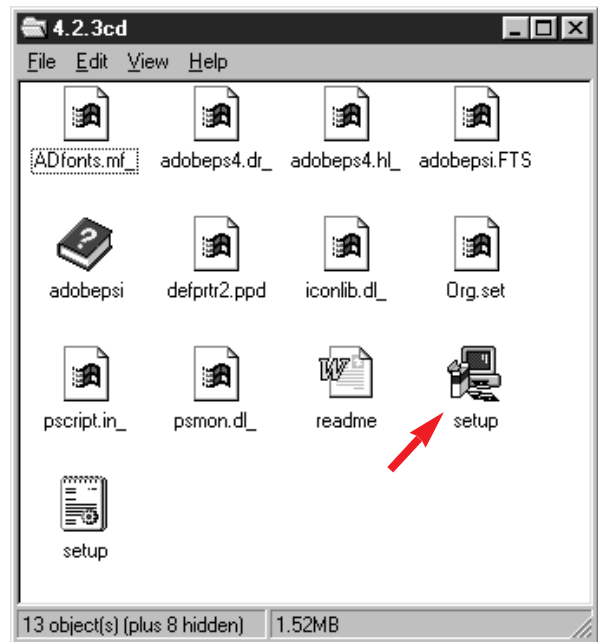
1. Double-click the *setup* application.

2. An Adobe “splash” screen will ask you to read, then accept or decline the terms of the Adobe license. Accepting continues the installation process.

The Adobe Printer Drivers may be used on any number of printers using Adobe PostScript software, and an unlimited number of computers (called *CPUs* in the license text).

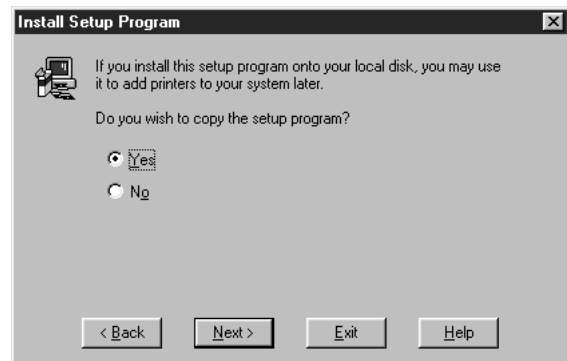
3. The next window explains the function of the Adobe PostScript Printer Driver Setup, and identifies the location of a ReadMe file that contains additional information.

You may also click on the *Read* button to open the *ReadMe* file mentioned.



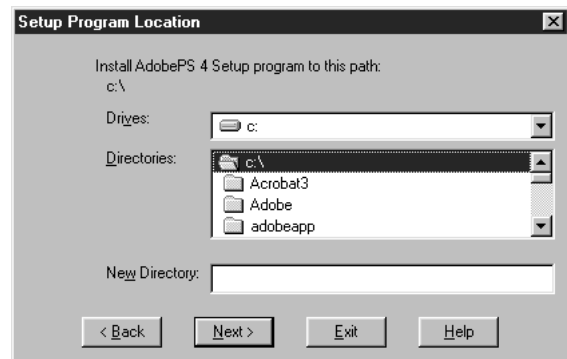
■ Installing the Adobe PS Driver (continued)

4. You also have the option of copying the setup program to your hard disk. Having a copy on the hard disk allows you to add additional printers later. We recommend checking **Yes** so you can install additional printers later.



5. If you choose to install the driver on your hard disk, the installer then asks for a path name for the installation. Select the drive and directory where you want the setup program to be installed.

The installer will put all the necessary directories and files on the disk drive you selected.



6. Setting-up the first printer, or adding a new printer requires the same steps. To continue from this point to set-up a specific printer, continue at Step 3 on the next page.

■ Setting Up your Printer with AdobePS Driver

for Windows 95, start with Start . . .

If you already have the AdobePS driver installed on your system and want to add a new printer, you must adopt a new technique for setting-up a printer.

It's different than the method used with the standard Windows printer settings.

1. Instead of using the *Add Printer* application in Windows 95 (*Start* menu, /*Settings/Printers/Add Printer*), use the *Start* menu, *Programs/AdobePS4/AdobePS 4.2 Setup Utility*.
2. The *AdobePS 4.2 PostScript Printer Driver Setup* utility will run. It begins by explaining the installation process. You may choose to read the *ReadMe* file that accompanies the program by clicking on the *Read* button, or hitting *Control-R*.

Setting up, or adding a Printer with AdobePS 4.2 for Windows 95

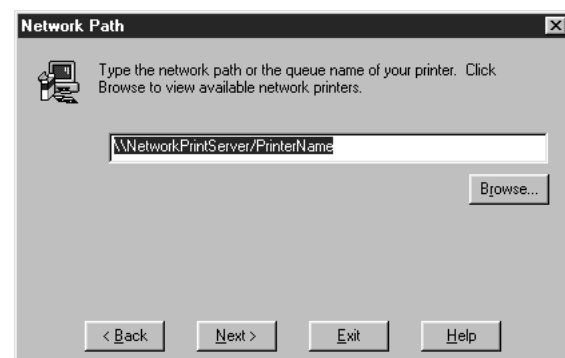
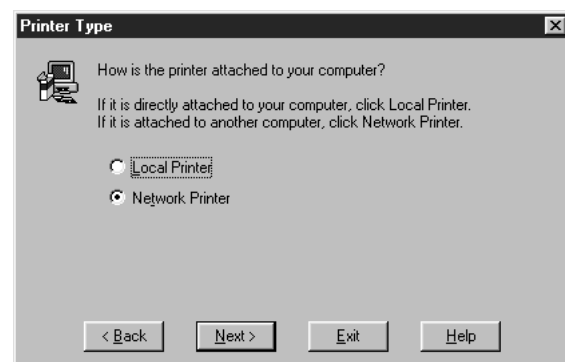
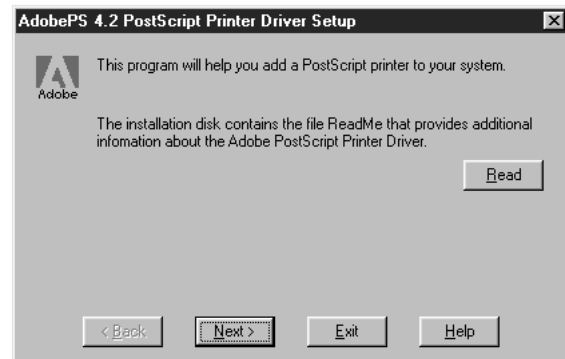
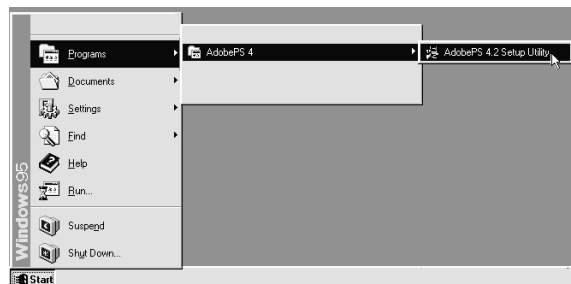
The following sequence is the same for installing a printer for the first time or adding an additional printer later.

3. Choose the type of printer to be added. *Network printers* are those connected through network wiring to your PC.

A *Local printer* is one connected directly to your computer, usually with a “parallel connection.” If yours is a *Local printer*, please skip to Step 5.

- 4a. If you choose *Network Printer*, you'll see a screen that allows you to browse the network for that printer. A standard Windows browser pops-up to allow the selection.

If you are not sure how to locate a printer on your network, please ask your network administrator for assistance.



■ Setting Up your Printer with AdobePS Driver (continued)

4b. Whether you choose a remote printer (one attached to another computer) or a printer connected to the network directly, the screen asks you to confirm the selection before proceeding to the next screen.

4c. Once the selection is made, the next screen prompts you to select a PPD (*PostScript Printer Description*) file for your printer. Choose the PPD that matches the make and model of the printer you are installing.

If you cannot find the correct PPD, look on the installers disk that shipped with your printer.

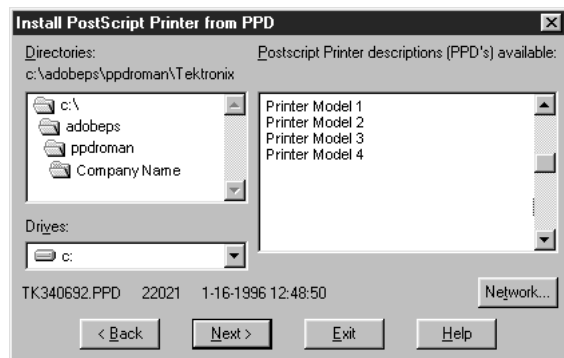
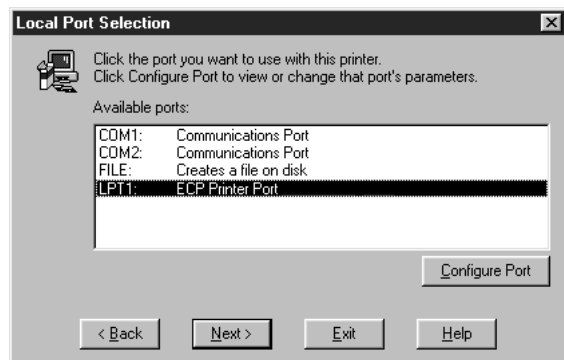
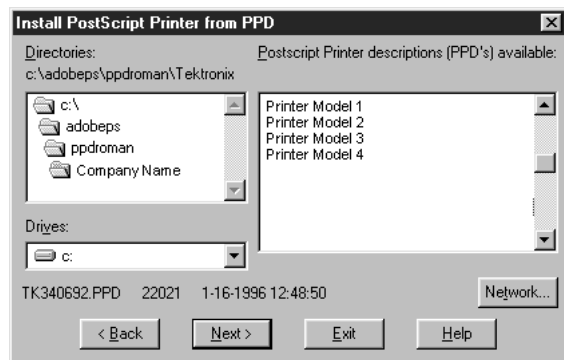
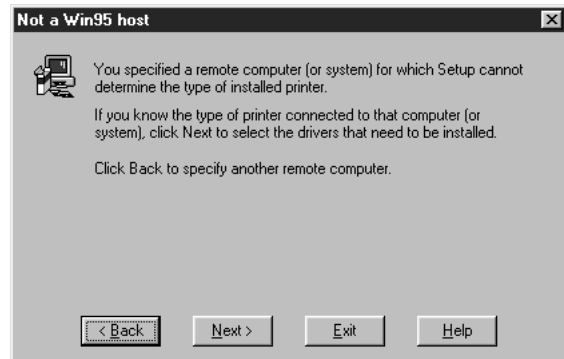
These *PPD* files tell your computer about the capabilities of a PostScript printer: its page size capabilities, color characteristics, resolution, and more. If yours is a network printer, skip to step 6.

5. If you choose a local printer, you'll see a slightly different set of screens than if you select a network printer. Local printers, those connected directly to your PC, are connected through a Printer Port, sometimes called an "I/O" (input-output) port.

The *Local Port* screen at right asks you to define the type of communications port you are using. The choices are usually COM1:, COM2:, LPT1:, or LPT2:.. If you are not sure about which communications port to select, please ask your network administrator for assistance.

Click *Next*, or type *Control-N*.

5a. The program will take you to the PPD selection screen (also shown in 3c above). Choose a PPD file that matches the make and model of the printer you are installing.

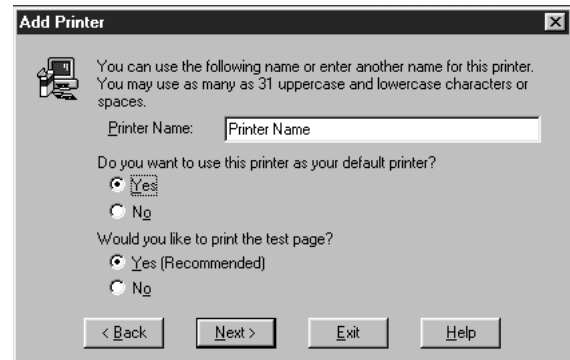


■ Setting Up your Printer with AdobePS Driver (continued)

6. At the *Add Printer* screen, you can accept the default printer name, or rename the printer.

You are also given the option of setting this printer as your default printer.

When you complete this step, it is recommended that you print a test page to determine if the printer is working correctly and its configuration is correct.



7. In the *Printer Properties* window you will see a number of tabbed headings including *Device Options*, *PostScript*, *Watermarks*, *Paper*, *Graphics*, and *Fonts*.

In the examples shown here, the printer is capable of printing on either *Letter* size or *A4* size papers. Other printers might feature other page size capabilities or additional paper trays.

In this window you can also set the number of copies you wish to print.

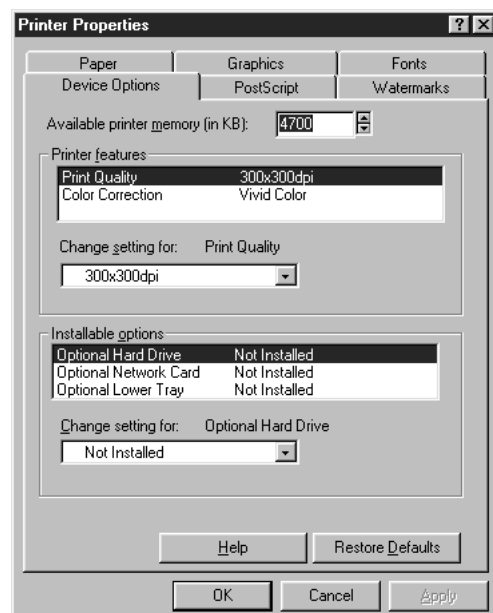
The *More Options* button will take you to a window that controls optional features of some printers – duplex printing, for example.



8. To complete your printer setup, click on the *Device Options* tab. This screen lets you establish default print settings and tell the driver about any optional features that have been added to your printer such as hard disks, network cards, or auxiliary paper trays.

Because each printer has different device options, your printer will probably show Properties that are different than those shown here.

There are hundreds of printers using Adobe PostScript software, and these printers have many different capabilities; the variations in these windows will reflect the diversity of these devices.

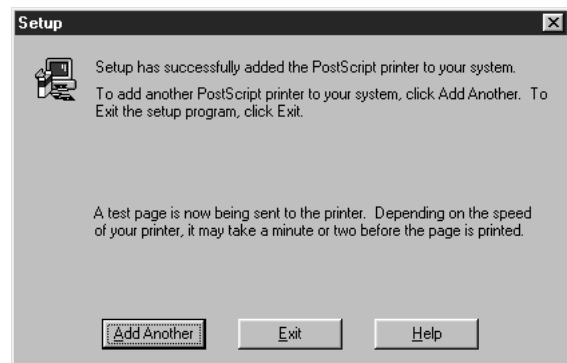
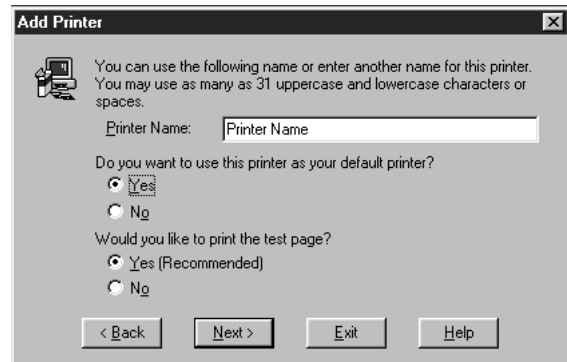


■ Setting Up your Printer with AdobePS Driver (continued)

- 9.** If you wish to add another PostScript printer to your computer, click on the *Add Another* button and repeat the process for the additional printer.

Click *Next*, or type *Control-N*.

- 10.** You're finished! To exit, either click on the *Exit* button, or hit *Control-E* on your keyboard. You can now use the Adobe Printer Drivers to print your documents more efficiently and successfully.



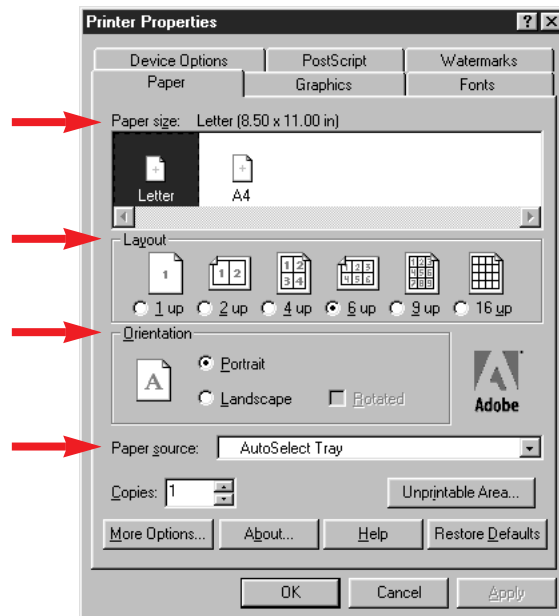
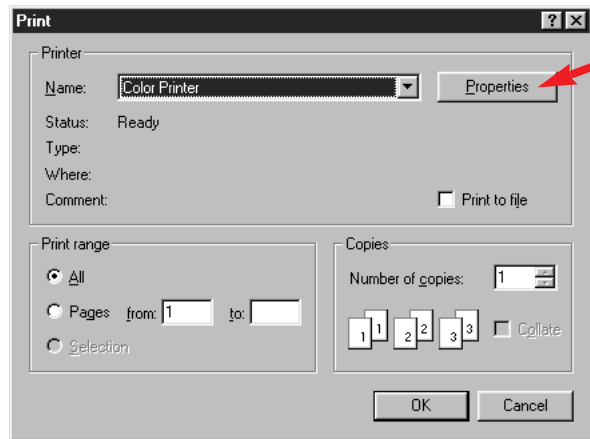
■ Printing with the AdobePS Driver

For Microsoft Windows 95

When you choose an Adobe PostScript printer (after setting up a printer with this software), your printer screen will look approximately like the one at right (though the screen will vary with different software applications).

- 1.** You'll select a printer by name from the pop-up menu. From this basic window, choose the number of copies to print, the range of pages to print, and collating settings. You can also choose to print the document to a PostScript File, by selecting the *Print to file* check-box.

- 2.** If you wish to check or change a printer's settings, click on the *Properties* button.
 - 2a.** Paper size choices for printers will vary; in the example at right there are choices for *Letter* and *A4* paper sizes.
 - 2b.** The *Layout* settings allow you to print documents multiple-up, allowing 1-up, 2-up or as many as 16-up printing on each sheet. This feature allows for at-a-glance documents, or presentation hand-outs, and increases the efficiency of printing. In this example the page is set to print 6-up
 - 2c.** *Orientation* settings control whether the page is printed upright (*Portrait*), or horizontally (*Landscape*).
 - 2d.** The *Paper source* setting defaults to *AutoSelect Tray*, but you may have the option (depending on your printer's capabilities) of selecting manual feed or auxiliary paper trays.

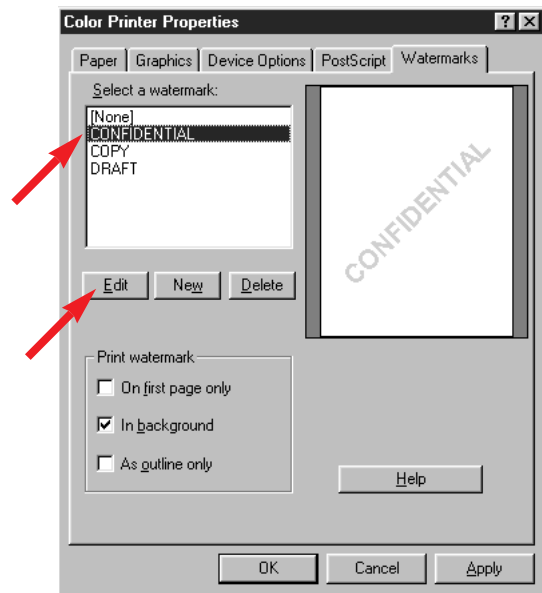


■ Printing with the AdobePS Driver (Continued)

3. Clicking on the *Watermarks* tab from the *Properties* window will deliver you to the screen shown at right.

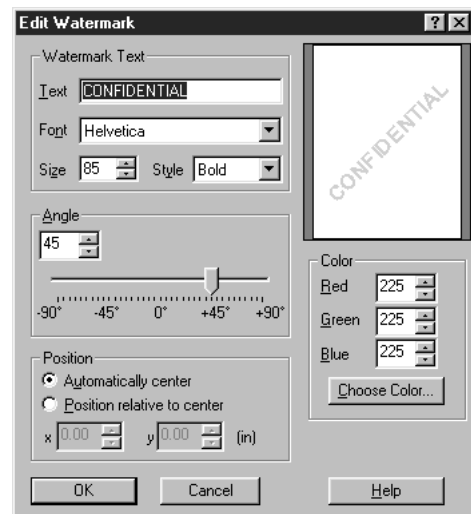
Watermarks can be used to indicate the revision status of a document, the confidentiality of a document, or to print any other message. Watermarks can be printed in the background or in the foreground of pages.

Available watermarks are listed in this window; you may use one of those shown, or you may click *New* or *Edit* to create new text for watermarking or edit an existing watermark.



4. If you select *Edit* from the *Watermarks* window, you'll reach the *Edit Watermark* window, where existing text can be edited, new text can be entered, and the position, angle, color, size and style of watermarks can be set or modified.

5. Click on *OK* when ready, and you'll be returned to the *Properties* window. Clicking *OK* from there will return you to the *Print* window, from which you can click *OK* to print your document.



Note: Tab settings for *PostScript*, *Fonts* and *Graphics* are for advanced users, and beyond the scope of this document. We recommend you leave them at their default settings.

■ Installing the AdobePS Driver

For Macintosh...

The Macintosh version of the Adobe Printer Drivers includes an Installer which puts files into your System Folder's *Extensions* folder and *Preferences* folder.

Installation is very easy, and takes just a few minutes.

1. Double-click on the *AdobePS Installer* icon, shown above, to begin the process.

2. An AdobePS "splash" screen will appear on your screen in a few seconds.

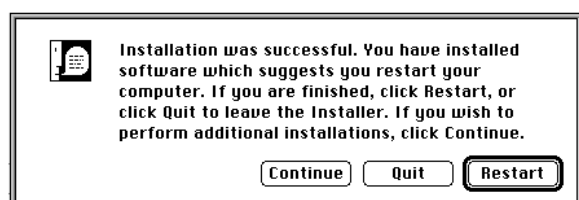
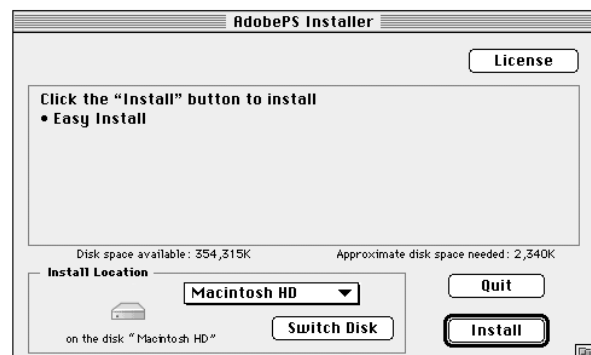
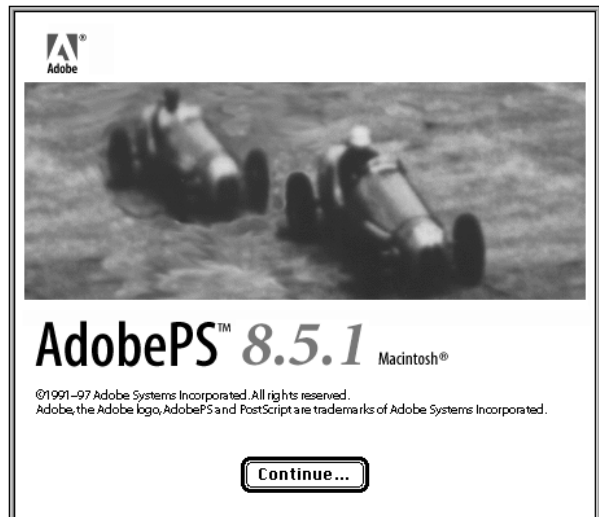
Click once on the *Continue* button to continue with the installation. You will then be greeted by a license agreement. The Adobe Printer Drivers may be used on any number of printers using Adobe PostScript software, and on an unlimited number of computers (called *CPUs* in the license text). Click *Agree* to continue with installation.

3. The software must be installed on the disk with the active System software. Click once on *Install* to continue the process.

4. A progress bar will indicate that the software is being installed, showing the individual file names in the process.

5. When complete, you'll see a dialog indicating that the installation was successful. You must restart your Macintosh for the System to recognize the new Extensions added by the Installer. Click *Restart* to do this.

Congratulations, you have successfully installed the AdobePS Printer Driver!



■ Setting Up a Printer with the AdobePS Driver

For Macintosh...

Use the Chooser

The Adobe Printer Drivers look like standard Apple LaserWriter® printers. After installation, the Adobe Printer Driver is found in the *Chooser*.

1. To select the *AdobePS* printer driver, click on it once. Once you have done this, a listing of all printers will show up in the window on the right. If you are connected to a single network zone, the window will look like the one shown here; multiple zone networks will show an additional *Zones:* window. For help with your network or its zones, please see your network administrator.

Click once on the name of the printer you wish to set-up.

2. Click once on the *Create* button.

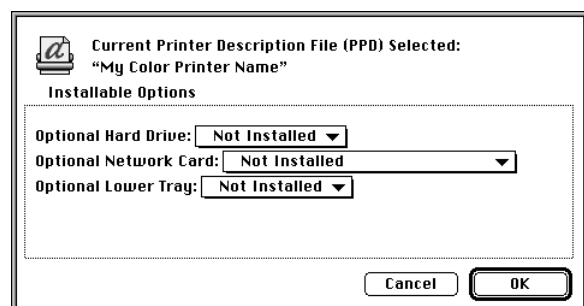
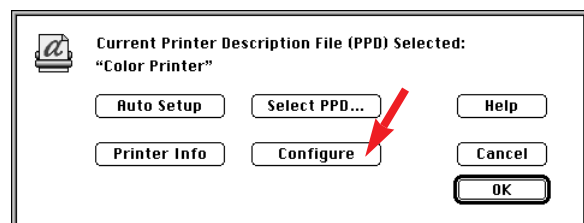
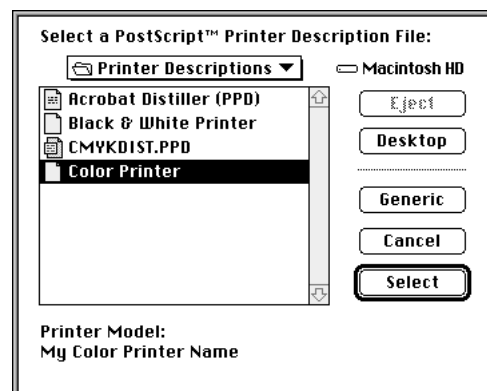
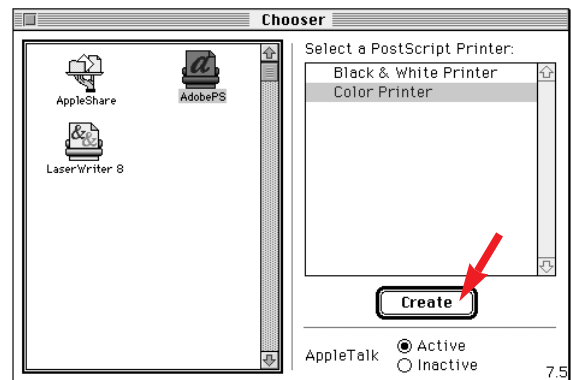
The AdobePS driver will configure your printer automatically. It will find a PPD (*PostScript Printer Description*) file that matches the printing device. A PPD for that printer must be present.

If it fails, or if you wish to override its choice, click once on the *Setup* button at the bottom of the Chooser window, then click on the *Select PPD* button. Select a PPD file that corresponds to your specific printer. Click once on the *Select* button. You will be returned to the *Setup* window.

3. To complete your printer setup, click once on the *Configure* button in the *Setup* window.

In the *Configure* window, you can make the AdobePS driver aware of any optional features that have been added to your printer, such as optional hard disks, network cards, or auxiliary paper trays.

Because each printer has different device options, your printer will probably show options that are different than those shown here.



■ Setting Up a Printer with the AdobePS Driver (Continued)

4. You're finished! After selecting your PPD file and settings for optional hardware, the driver will create a new desktop printer icon (shown at right) for your printer. This icon will be placed automatically on your desktop.

Macintosh computers with Operating Systems earlier than version 7.1, and those whose Desktop Printers have been disabled with the *Extensions Manager* will not support or display desktop printer icons. Under these circumstances, use the *Chooser*, *Page Setup* or *Print* window to select a printer.

5. A desktop printer with a dark outline is the active printer. To change printers, you can select one in the *Chooser*, from any *Page Setup* or *Print* window, or you can click once on the desktop printer icon, then pull-down from the Printing menu to *Set Default Printer* (or type *Command-L* from the keyboard).



■ Using the AdobePS Driver

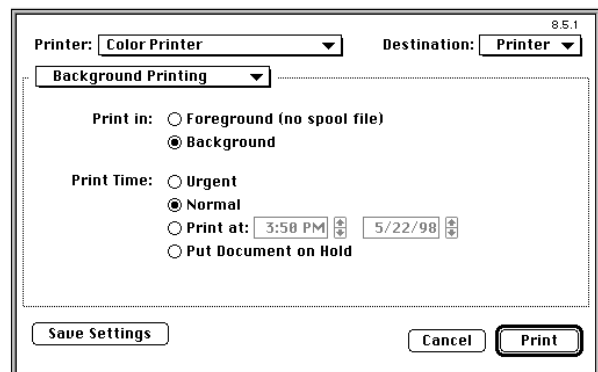
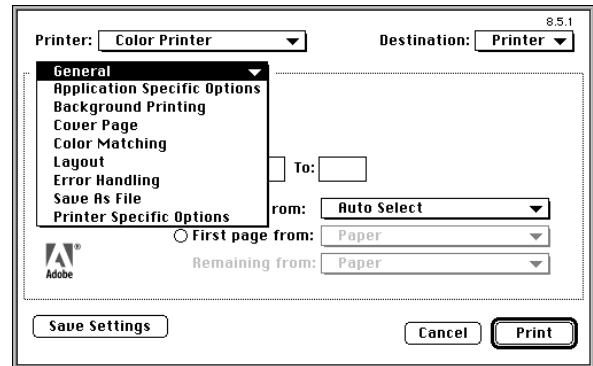
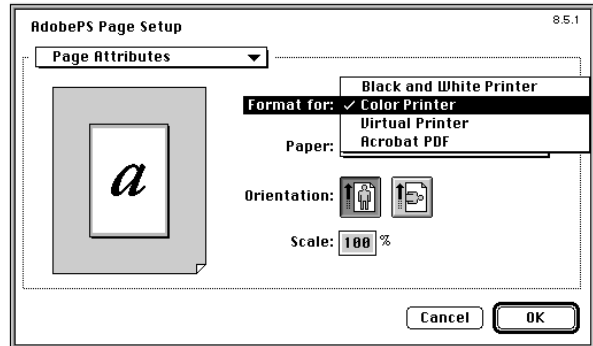
For Macintosh...

1. Once a printer is selected, it is available for use by any application. To print from an application using the AdobePS Drivers, select *File*, then *Page Setup*.
Select the correct printer (using the *Format for:* pop-up menu), the page size, page orientation, and percentage for printing before proceeding.

2. After setting *Page Setup* features, select *File*, then *Print*. Many printing functions are selected from this window, including *General*, *Application-Specific Options*, *Background Printing*, *Cover Page*, *Color Matching*, *Layout* (where multiple-up printing is set) *Error Handling*, *Save as File*, and *Printer-Specific Options*.

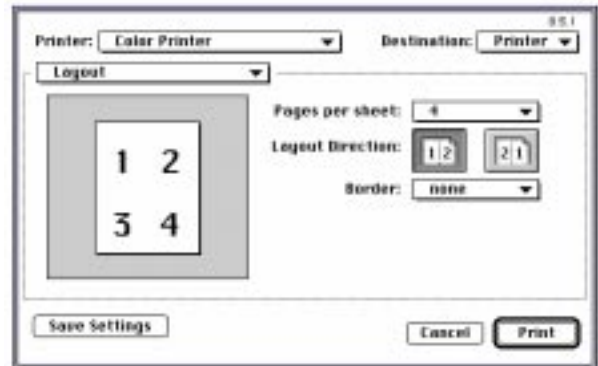
These menus are organized to put all print-related controls in one location. Following are instructions for three of the most important selections: *Background Printing*, *Layout*, and *Printer Specific Option*.

3. In the *Background Printing* window, you may select *Foreground* or *Background* printing.
Foreground printing ties-up your Macintosh while it prints the job. Printing is completed more quickly, and the document takes less disk space when preparing for printing.
The *Background* selection causes your Macintosh to write your job to the hard disk before printing it. This frees-up the computer so you can work while the job is printing, but it takes longer overall.



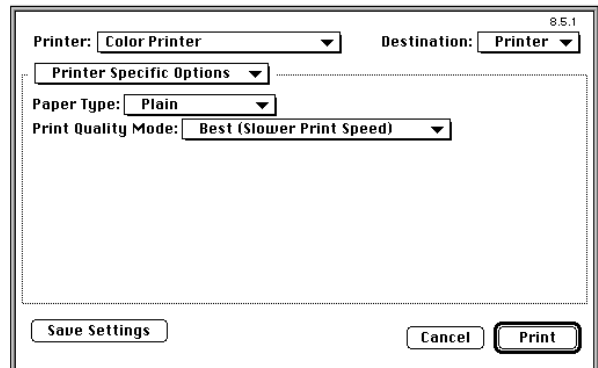
■ Using the AdobePS Driver

4. In the *Layout* window shown here, a four-up layout is selected that prints four pages on one sheet of paper. This multiple-up feature allows printing at-a-glance documents, or hand-outs from presentation programs, and can save on consumable materials.



5. Be sure to inspect the *Printer Specific Options*. This is where features unique to your printer are set. Because different printers offer different features, the list of controls, and the contents of these windows will vary.

Once the various settings have been made, they can be saved as default by clicking on the *Save Settings* button.



6. To print, click once on the *Print* button.

■ Special Features – Watermarks

Watermarks plug-in (Macintosh)

Benefits of Watermarking

The Watermark function lets you add a graphic or text watermark to the background or foreground of your current document.

Watermarks can be used to indicate draft status, security level, and other document management functions. You may also choose to print a corporate logo in the background of each page of your documents.

Watermarks can be saved from any text application, Illustration application or graphics program that writes text, PICT, or EPS files. Save graphics files to be used as watermarks in the *Watermarks* folder, located in the *Preferences* folder in the *System Folder*. There is also the option to create, edit and save text-based watermarks from within the *Watermark* window (see the illustration at right).

What's needed

- *Watermark* plug-in
(available from www.adobe.com)
Look for *Free Plug-ins and Updates*.

Installation

Installing the AdobePS drivers does not automatically install *Watermark*; it is a separate software plug-in. Place the *Watermark* plug-in inside the *Printer Descriptions* folder in the *Extensions* folder. Place the *Watermarks* folder in the *Preferences* folder in the *System Folder*. Restart your Macintosh.

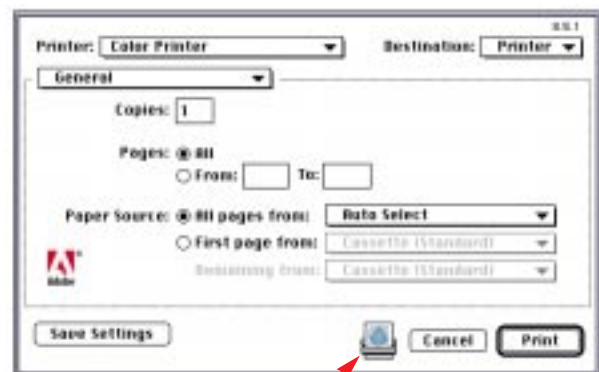
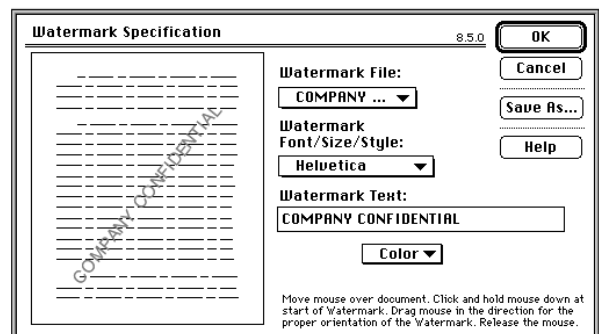
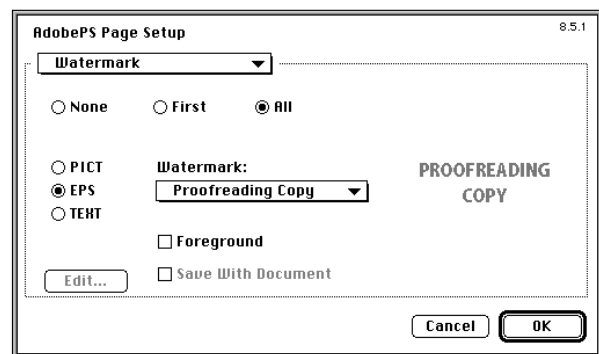
Setup and Use

Once the *Watermark* plug-in and its associated folder are installed, *Watermark* will show-up in the *Page Setup* window.

To use a watermark, you select the artwork to use from the pop-up menu, and set whether it is to appear as a foreground or background watermark. A preview of the watermark will be shown at the right of the window.

You also have the option of printing the watermark on the first page, or on all pages of your document.

When *Watermark* is enabled, an icon of the *Watermark* feature is displayed adjacent to the *Print* and *Cancel* buttons; this is a visual reminder that a watermark will be printed with the document.



■ Special Features – Virtual Printer

Virtual Printer plug-in (Macintosh)

Benefits of the Virtual Printer

AdobePS drivers on the Macintosh also allow for a *Virtual Printer*. The Virtual Printer shows up in *Page Setup*, (it does not show up in the Chooser) and can be used whenever a printer is not physically present on your network. Design studios, for example, can print to the Virtual Printer when the actual printer is located at their service bureau.

What's needed

- The *Virtual Printer* plug-in (available from www.adobe.com)
Look for *Free Plug-ins and Updates*.

Installation

Installing the AdobePS drivers does not automatically install the Virtual Printer; it is a separate software plug-in. To install the Virtual Printer, move the *Virtual Printer* plug-in to the *Printer Descriptions* folder in the *Extensions* folder. You will also need a PPD (*PostScript Printer Description*) file for the actual printer that will eventually print the job, though generic PPDs can be used.

Restart your Macintosh.

Setup and Use

To configure the Virtual Printer, you select it from the *Page Setup* window Printer assignment pull-down menu.

Click once on the *Select PPD* button. Specific PPDs will work, as will generic PPDs that describe the capabilities of a printer without committing the job to a specific hardware device.

Click *Select*, then *OK*. Once configured, the PPD assignment will be the default setting until you change it.

To print from any application choose *File* then *Print*. The AdobePS driver will write a PostScript File to your disk (you select the location) which contains all the needed information for successful printing on the remote printer you have selected.

Once you have used *Virtual Printer* for the first time, it will create a desktop printer icon that can be selected like other printers in subsequent uses.

